

## Why is NC-CHAMP important?

By collecting health information on children, the NC-CHAMP survey contributes to a seamless health data system for all North Carolina citizens from birth to old age. NC-CHAMP provides valid and reliable data on health issues of North Carolina children that can be used to:

- Monitor progress towards selected health targets, such as Healthy Carolinians 2010 and 2020.
- Identify priority child health issues for North Carolina.
- Establish benchmarks for reducing child health risks and behaviors.
- Compare North Carolina with national results.
- Assist health professionals with evidence-based decisions, policies and program strategies.
- Help track progress of health programs over time and assist in altering programs to best meet the needs of North Carolinians.
- Inform key stakeholders in North Carolina about the extent and scope of health-related problems of North Carolina children.



## State of North Carolina

Department of Health and Human Services  
Albert A. Delia, Acting Secretary  
[www.ncdhhs.gov](http://www.ncdhhs.gov)



Division of Public Health  
Laura Gerald, MD, MPH  
State Health Director



Chronic Disease and Injury Section  
Ruth Petersen, MD, MPH, Chief

State Center for Health Statistics  
Karen L. Knight, MS, Director  
[www.schs.state.nc.us/SCHS](http://www.schs.state.nc.us/SCHS)

Please visit the NC-CHAMP website for annual questionnaires, results, and publications:  
[www.schs.state.nc.us/SCHS/champ](http://www.schs.state.nc.us/SCHS/champ)

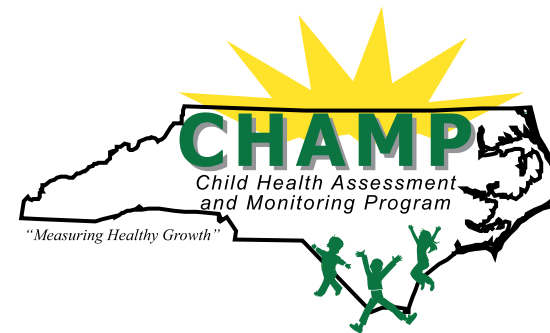
For questions or more information about the North Carolina Child Health Assessment and Monitoring Program, please contact the NC-CHAMP Survey coordinator at:

State Center for Health Statistics  
Division of Public Health  
North Carolina Department of  
Health and Human Services  
2422 Mail Service Center  
Raleigh, NC 27699-2422  
[CHAMPstaff@dhhs.nc.gov](mailto:CHAMPstaff@dhhs.nc.gov)  
(919) 855-4494 phone  
(919) 715-7899 fax

March 2012

The North Carolina Department of Health and Human Services does not discriminate on the basis of race, color, national origin, sex, religion, age or disability in employment or the provision of services.

# NORTH CAROLINA Child Health Assessment & Monitoring Program



*Surveying child health in  
North Carolina since 2005*

[www.schs.state.nc.us/SCHS/champ](http://www.schs.state.nc.us/SCHS/champ)

## What is NC-CHAMP?

The North Carolina Child Health Assessment and Monitoring Program (NC-CHAMP) is a surveillance system that collects information about the health characteristics of children and adolescents from birth to age 17 in North Carolina. Implemented annually since 2005, CHAMP is designed to meet the following goals:

**Goal 1:** Monitor the status of child health (ages 0–17) and identify child health problems in North Carolina.

**Goal 2:** Measure parents' perspectives on child health issues.

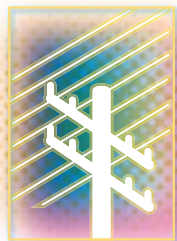
**Goal 3:** Provide accurate and valid data to inform evidence-based decisions, strategies and policies to improve child health.

**Goal 4:** Assess relationships between parent health and child health, and inform family-centered approaches to improve child health.



## How is NC-CHAMP information collected?

NC-CHAMP is a follow-up survey of the Behavioral Risk Factor Surveillance System (BRFSS) that operates through the State Center for Health Statistics' (SCHS) Survey Center. The BRFSS is an annual survey that assesses health characteristics of adults age 18 and older that uses a random-digit-dial (RDD) computer-assisted-telephone-interviewing (CATI) system. Eligible children for the NC-CHAMP survey are drawn each month from the NC-BRFSS telephone survey. All adult respondents with children living in their households are invited to participate in the NC-CHAMP survey.



## Overview of Previous NC-CHAMP Survey Topic Areas

- Asthma
- Birth Characteristics
- Breast Feeding
- Child Care
- Child Discipline
- Child Health Conditions
- Child Safety and Injury
- Children with Special Health Care Needs
- Early Childhood Development
- Family Involvement
- Food Insecurity
- Food Preparation
- General Health
- Gun Safety
- Health Care Access and Utilization
- Height and Weight
- Immunizations
- Mental Health and Disability
- Nutrition
- Oral Health
- Parent Education
- Parent Opinion
- Parent Reaction to Child Weight
- Physical Activity
- School Performance
- Sexual Behavior
- Sun Safety
- Tobacco Indicators

## How is the NC-CHAMP survey developed?

The NC-CHAMP annual survey is revised each year to meet the child health surveillance needs of North Carolina. Questions to be included in the NC-CHAMP survey are solicited from the North Carolina public health community. Agencies outside of the Division of Public Health have the opportunity to sponsor questions for a fee. Policy and forms on how to add data items to the survey are available on the NC-CHAMP website. **The deadline for applications for NC-CHAMP questions is July 1.** The final decisions on which questions will be included in the survey are made by September 1.

## Where are NC-CHAMP results available?

Detailed data tables are posted on the NC-CHAMP website on an annual basis. Data are available for each calendar year starting with 2005. State level estimates are available for a variety of child health measures, tabulated by sex, race, ethnicity and age group. Publications that reference NC-CHAMP data are also available through the NC-CHAMP and SCHS websites.

## Sponsors

NC-CHAMP gratefully acknowledges the core support of the federally funded Maternal and Child Health Block Grant. Additional funding and support has been provided by: **North Carolina Public Health Agencies**—Asthma Program; Children and Youth Branch; Diabetes Prevention and Control Branch; Office of Disability & Health; Heart Disease & Stroke Prevention Branch; Injury and Violence Prevention Branch; Nutrition Services Branch; Oral Health Section; Physical Activity and Nutrition Branch. **Other Agencies**—Blue Cross and Blue Shield of North Carolina; North Carolina Department of Public Instruction; North Carolina Healthy Schools. **UNC-Chapel Hill**—Adolescent Medicine; Center for Health Promotion and Disease Prevention; Gillings School of Global Public Health; Health Behavior and Health Education; Nutrition; Pediatric Dentistry.